

# 340AJ

## ARTICULATING BOOM LIFT

BOOM LIFT



### KEY SPECS

**Platform Height**  
33-ft 10.5-in / 10.33-m

**Up and Over Reach**  
17-ft / 5.17-m

**Horizontal Outreach**  
19-ft 11-in / 6.06-m

**Platform Capacity**  
500-lb / 227-kg

### KEY FEATURES

- Peak productivity with 33-ft 10.5-in platform height and 17-ft up and over reach.
- Steel hoods ensure added durability.
- Delivers industry-leading terrainability.
- Ideal for general contractors, steel erectors, painters, stadium construction and more.

### ACCESSORIES & OPTIONS

- 1/2-in Airline to Platform
- 43.5-lb / 19.7-kg Propane Tank
- AC Generator, 3500W
- Arctic Package<sup>1</sup> (Diesel)
- Cold Weather Start Kit (Diesel)<sup>2</sup>
- Hostile Environment Kit
- Light Package
- Platform Mesh to Mid or Top Rail
  - Aluminum or Plastic
- Platforms
  - Drop Bar, 30 x 36-in, 30 x 48-in, 30 x 60-in
  - Inward Self-Closing Swing Gate, 30 x 48-in, 30 x 60-in
- Storage Tray - Center or Corner
- White Noise Alarm

1. Includes Arctic Hydraulic Hoses (Drive and Steer Only) and Main Boom Cable, Arctic Hydraulic Oil, Extreme Cold Engine Oil, Anti-freeze, Fuel Conditioner, Engine Block Heater, Battery Blanket, Glow Plugs, Hydraulic Tank Heater, and Oversized Footswitch.  
2. Includes Engine Block Heater, Battery Heater, Oil Tank Heater.

Not All Options Can Be Outfitted On the Same Machine; Consult Factory for Compatibility. Additional Accessories and Options Available via JLG Aftermarket.

### STANDARD SPECIFICATIONS

#### Performance

Platform Height	33-ft 10.5 / 10.33-m
Horizontal Outreach	19-ft 11-in / 6.06-m
Up and Over Height	17-ft / 5.17-m
Swing	355 Degrees Non-Continuous
Platform Capacity	500-lb / 227-kg
Platform Rotator	180 Degrees Hydraulic
Jib	4-ft / 1.22-m
Range of Articulation	139 Degrees (+79, -60)
Weight*	9,700-lb / 4,400-kg
Max. Ground Bearing Pressure	64 psi / 4.5 kg/cm <sup>2</sup>
Drive Speed (4WD)	3.1 mph / 4.98 km/h
Tilt Cut Out	4 Degrees
Gradeability (4WD)	45%
Turning Radius Inside	5-ft / 1.52-m
Turning Radius Outside	13-ft / 3.96-m

#### Engine

Dual Fuel Engine – PSI/GM L4 EFI	28.7 hp / 21.4 kW
Diesel Fuel – Kubota D1105	24.8 hp / 18.5 kW
Fuel Tank Capacity	13 gal / 49.21 L

#### Tires

Standard	Foam Filled, 9x20
Optional	Foam Filled Non-Marking, 9x20 Foam Filled Turf & Sand, 33x12 Solid, 7x18 Solid Non-Marking, 7x18

#### Hydraulic System

Capacity	20.6 gal / 77.9 L
Auxiliary Power	12V DC

### STANDARD FEATURES

- 4 Degree Tilt Alarm/Indicator Light
- 4-ft (1.22-m) Articulating Jib
- 12V-DC Auxiliary Power
- 110V-AC Receptacle in the Platform
- All Motion Alarm
- Cast Aluminum Control Box
- ClearSky Smart Fleet™ Hardware (CS550)\*\*
- Control ADE® System
- Glow Plugs (Diesel Engines)
- Gull-Wing Steel Turntable Hoods
- Horn
- Hourmeter
- Hydrostatic Drive
- LED Motion/Amber Beacon (CS550)\*\*
- Lifting/Tie Down Lugs
- Load Sensing System
- Oscillating Axle
- Platform Console Machine Status Light Panel\*\*\*
- Proportional Controls
- SkyGuard SkyLine™
- Swing-Out Engine Tray

\*Certain Options or Country Standards Increase Weight.

\*\*Standard Beacon and ClearSky Smart Fleet Hardware Availability Varies by Model Throughout 2023.

\*\*\*Provides Indicator Lights at Platform Control Console for System Distress, Low Fuel, Degree Tilt Light and Foot Switch Status.

# 340AJ

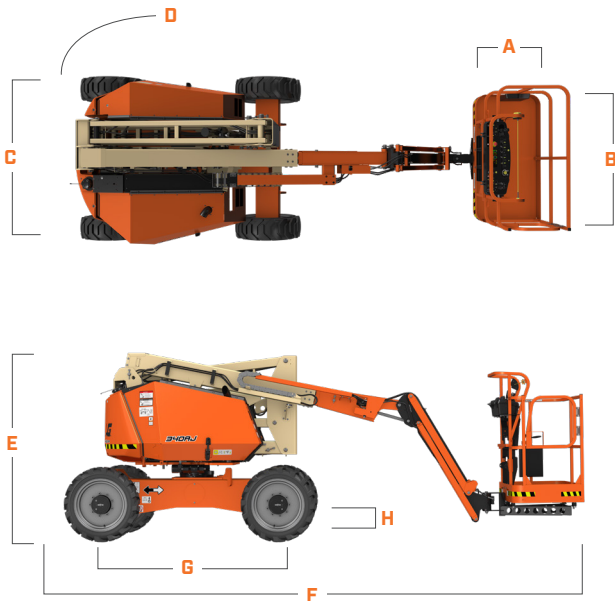
## ARTICULATING BOOM LIFT

BOOM LIFT



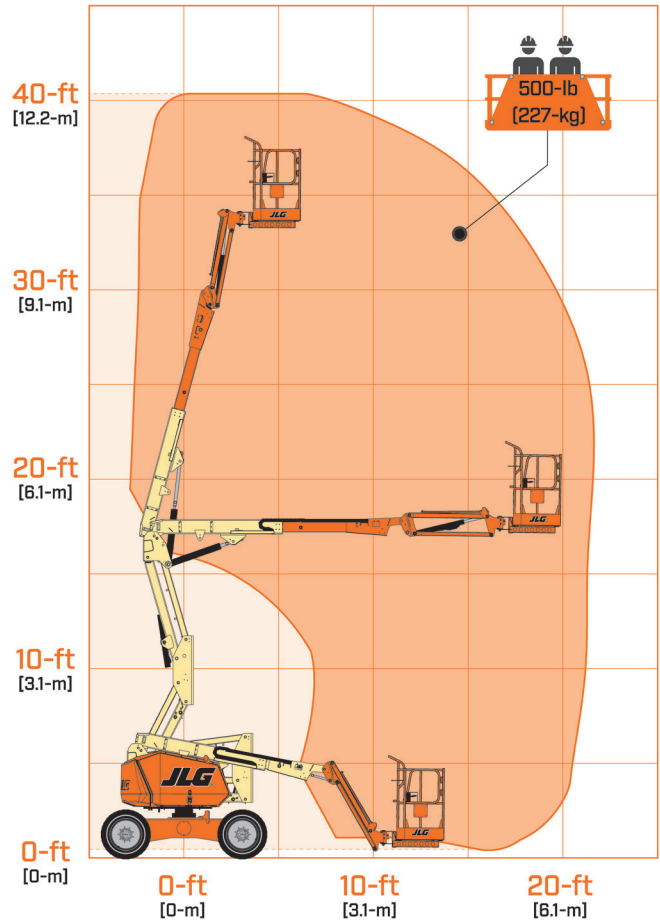
### DIMENSIONS

All dimensions are approximate



- A.** Platform Width 30-in / 0.76-m
- B.** Platform Length 60-in / 1.22-m
- C.** Machine Width 6-ft 4-in / 1.93-m
- D.** Tailswing 2-in / 5.08-cm
- E.** Machine Height 6-ft 7-in / 2-m
- F.** Machine Length 18-ft 2-in / 5.52 m  
13-ft 2-in / 4.02-m with Jib Stowed
- G.** Wheelbase 6-ft 2-in / 1.87-cm
- H.** Ground Clearance 10-in / 23.7-cm

### REACH DIAGRAM



We provide coverage for one (1) full year, and cover all specified major structural components for five (5) years. Due to continuous product improvements, we reserve the right to make specification and/or equipment changes without prior notification. This machine meets or exceeds applicable ANSI and CSA requirements based on machine configuration as originally manufactured for intended applications. Please reference the serial number plate on the machine for additional information.



**JLG INDUSTRIES, INC.**  
Toll-free US 877-JLG-LIFT  
**JLG.com**

An Oshkosh Corporation Company